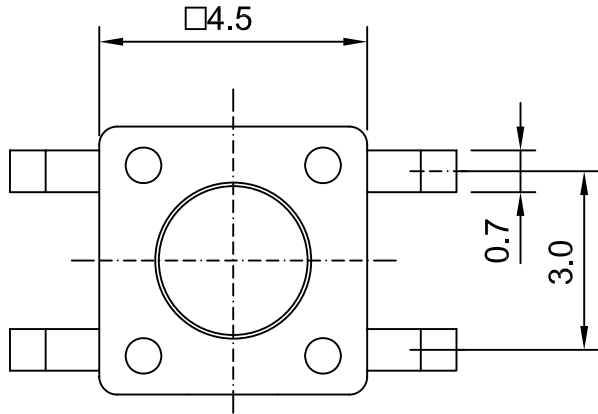
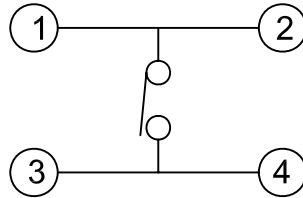


REV.	ECN. NO.	DR.	DATE
A	NEW	JOHN	081204



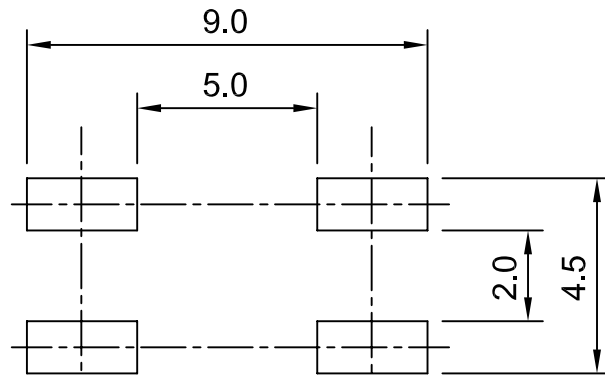
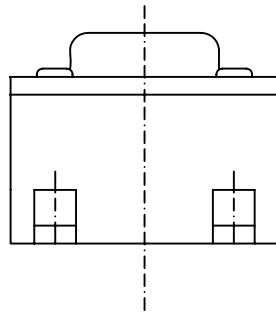
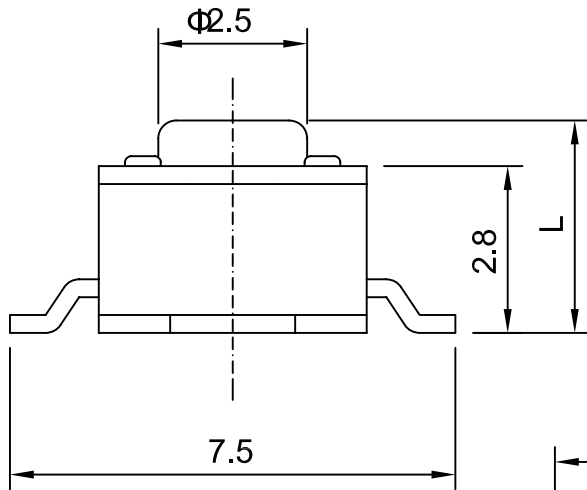
CIRCUIT DIAGRAM



NO	MODEL	KNOB(L)
1	TS-1109S	3.8 mm
2	TS-1109SA	7.0 mm

SPECIFICATIONS

1. RATING : DC 12V, 50mA Max
2. CIRCUIT : 1C - 1P
3. OPERATING FORCE : 100,160 ± 50gf
250 ± 50gf
4. CONTACT RESISTANCE : 100mΩ Max
5. TRAVEL : 0.25±0.1mm
6. LIFE : 100,000Cycles Min
7. TOLERANCE : ±0.3mm



P.C board mounting hole dimensions

Title: SWITCH, SMT		豪國興業股份有限公司 HAOGUO XING YE SHARE CO.,LTD.	
<i>tolerances</i>		<i>app.</i>	<i>units</i>
<i>linear</i>	<i>angles</i>	<i>chk.</i>	<input checked="" type="checkbox"/> mm
.x ±0.2	x.' ±5°		<input type="checkbox"/> inch
.xx ±0.2	.x.' ±2°	<i>dr.</i>	<i>size</i>
.xxx ±0.2	.xx.' ±1°	JOHN	A4
<i>projection</i>	<i>revision.</i>	<i>date.</i>	<i>scale</i>
	A	081204	-
		<i>part no:</i>	<i>sheet</i>
		-	1/1
		<i>dwg no.</i>	TS - 11