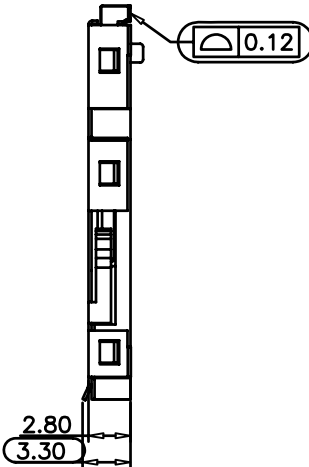
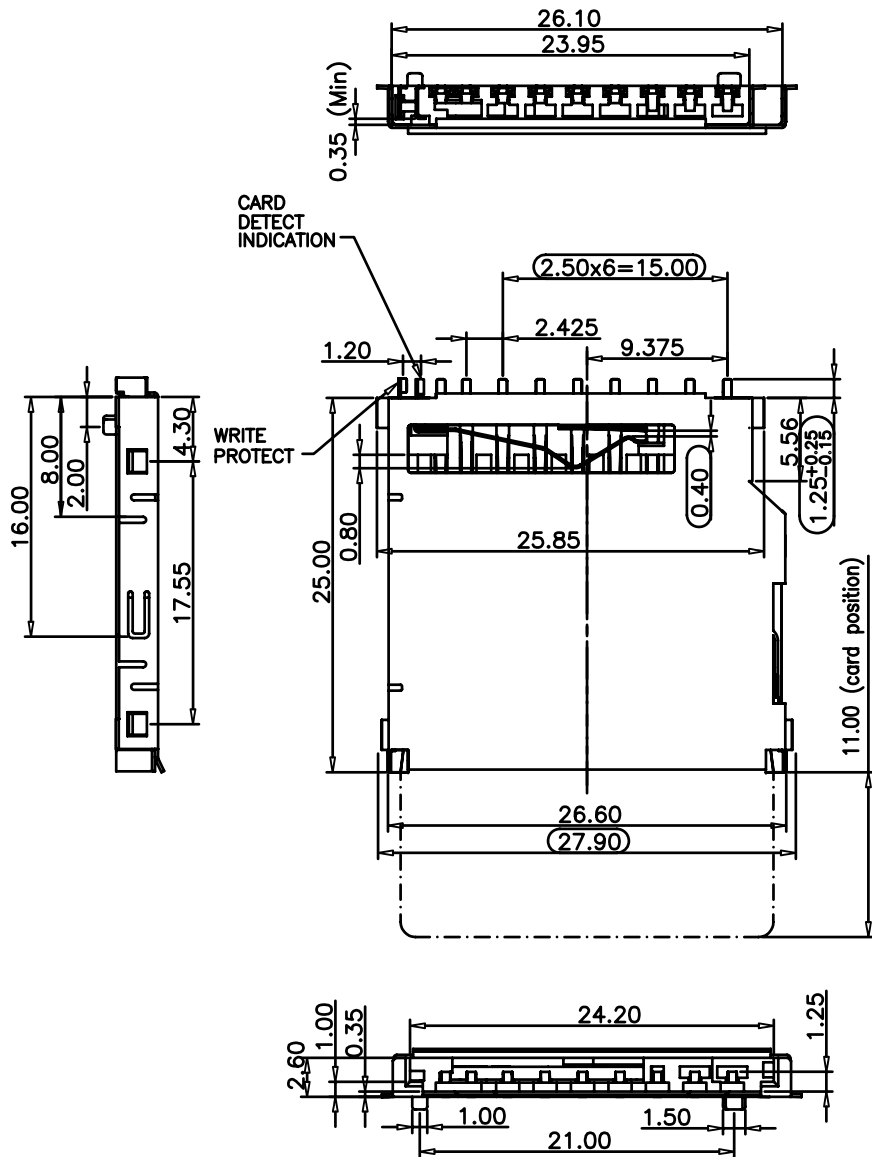
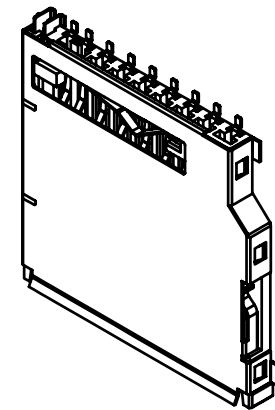


MATERIAL

Insulator: Thermal Plastic UL94V-0
 Contacts: Copper Alloy
 Boardlock: Copper Alloy
 CONTACT PLATING
 Underplate: 50u" Nickel
 Contact Area: 3u" and 15u" Selective Gold Plating
 Solder Tails Area: 100u" Tin/Lead Free(Matte Tin)
 Contact Number: 9Pin
ELECTRICAL
 Current Rating: 1 Amps Max.
 Contact Resistance: 100 mohms Max.
 Insulation Resistance: 1000 Mohms Min @ 500 VDC
MECHANICAL
 Mating Cycles: 10000 Cycles
 Temperature Range: -25°C TO +85°C



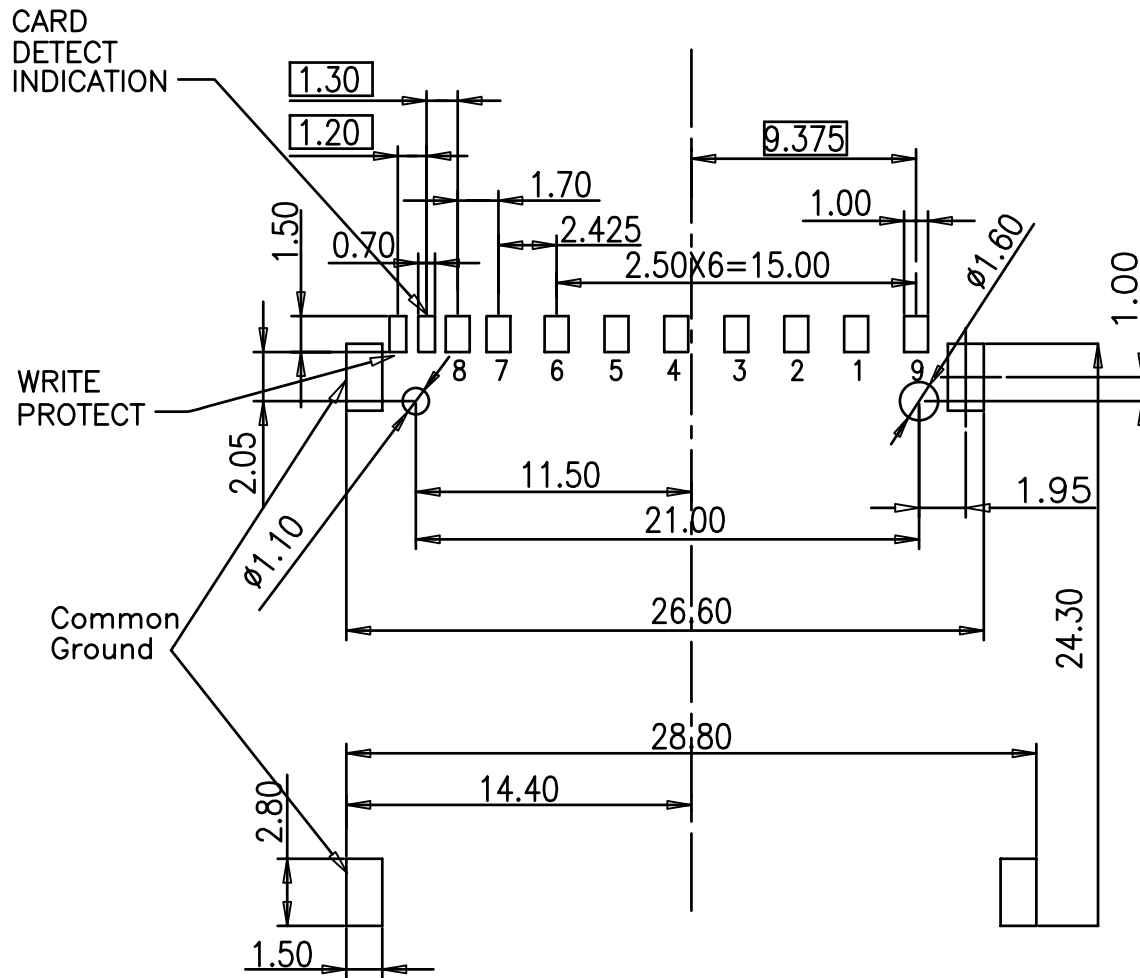
PIN#	NAME
1	CD/DAT3
2	CMD
3	VSS1
4	VDD
5	CLK
6	VSS2
7	DAT0
8	DAT1
9	DAT2



UNLESS OTHERWISE SPECIFIED TOLERANCE	
ANG.	±5°
0.	±
.0	±0.25
.00	±0.20
SCALE: AS SHOWN	UNIT: mm
DRAWN	2007/1/18
CHECKED	/ /
APPROVED	/ /
SIZE	A4

豪國興業股份有限公司	
DRAWN NAME:	SD+MMC Socket
PRODUCT NO.	SDMMC09RS
FILE NAME:	

REV.	DESCRIPTION	DATE	SIZE	REV.
1			A4	



RECOMMENDED P.C.B LAYOUT
TOLERANCES: $\pm 0.05\text{mm}$

UNLESS OTHERWISE SPECIFIED TOLERANCE		豪國興業股份有限公司	
ANG.	$\pm 5^\circ$	SCALE: AS SHOWN UNIT: mm	
0.0	\pm		
.0	± 0.25		
.00	± 0.20		
DRAWN	2007/1/18	DRAWN NAME: SD+MMC Socket	
CHECKED	/ /	Top Mount	
APPROVED	/ /	PRODUCT NO. SDMMC09RS-2	
REV.		SIZE A4	FILE NAME:

REV.	DESCRIPTION	DATE
1		
2		
3		
4		
5		
6		
7		
8		
9		
10		