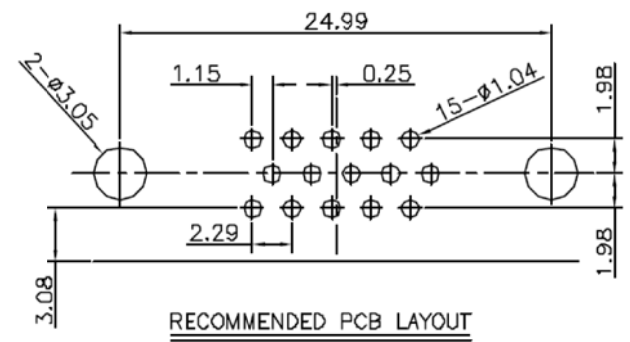
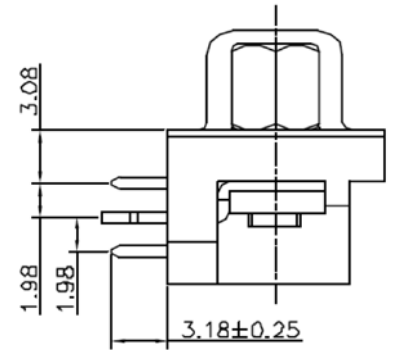
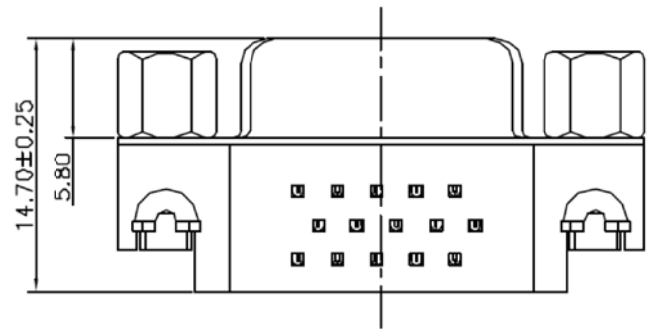
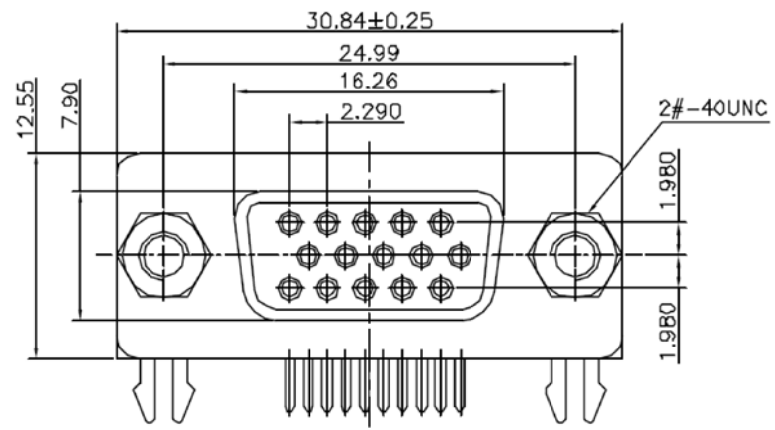


REV.	DESCRIPTION	DATE	DWN	APVD
1	PRELIMINARY	06NOV09	JC	BC



NOTE  
MATERIAL  
INSULATOR: PBT +30%GF  
CONTACTS: BRASS  
SHELL: SPCD  
CONTACT PLATING: GOLD PLATING OVER NICKEL  
ELECTRICAL SPECIFICATION  
CURRENT RATING: 3A;  
CONTACT RESISTANCE: 25mΩ MAX.  
INSULATION RESISTANCE: 1000MΩ MIN 500V DC.  
DIELECTRIC WITHSTANDING VOLTAGE: 1000V AC  
ENVIRONMENTAL  
OPERATING TEMPERATURE: -55°C~105°C.  
PART NO. DESCRIPTION:

10 4-15 2 X 2 X XX 01  
SERIES NO: SERIAL NUMBER  
PRODUCT KIND: COLOR CODE: 01=WHITE  
PIN NUMBER: 02=BLACK 05=BLUE  
FEMALE: PLATING CODE: A=1u'  
B=3u'  
NUT TYPE: 1=NO LOCK NUT  
2=LOCK NUT, 3=ADD NUT  
DIP HEIGHT: 2=3.08mm

TOLERANCES UNLESS OTHERWISE SPECIFIED: 0 PLC ± - 1 PLC ± 0.3 2 PLC ± 0.15 3 PLC ± 0.1 4 PLC ± - ANGLES ± 3°	DWN	06NOV2009	<b>HAOGUO XING YE SHARE CO.,LTD.</b>			
	CHK	06NOV2009				
	APVD	06NOV2009	NAME			
	PRODUCT SPEC	D-SUB, 15P, RA, DIP.				
MATERIAL	SEE NOTE	APPLICATION SPEC	SIZE	DRAWING NO	RESTRICTED TO	
FINISH	SEE NOTE	WEIGHT	A3 -		-	
PROJECTION	DIMENSIONS: MM		CUSTOMER DRAWING	SCALE	SHEET 1 of 1	REV 1