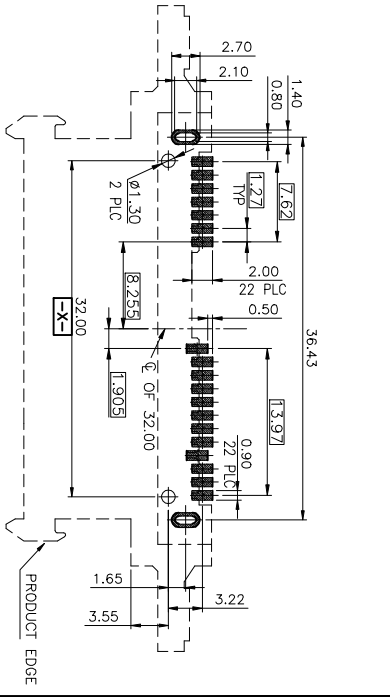
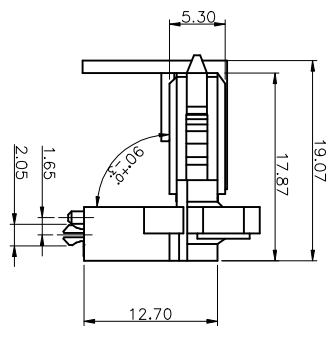
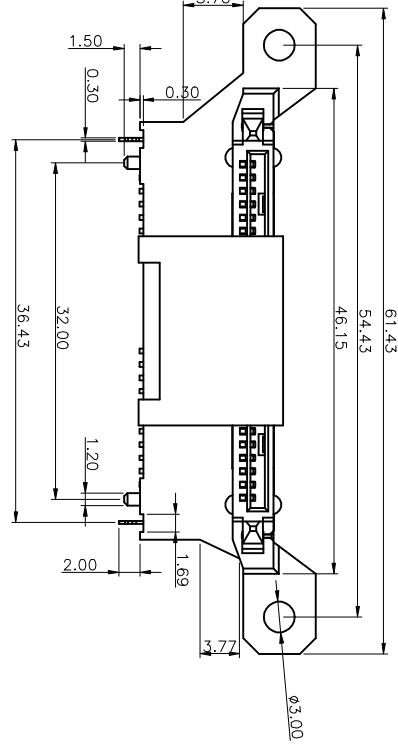
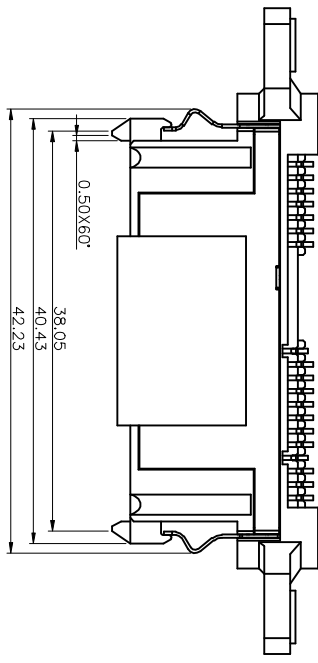


REV	DESCRIPTION	DATE	DWV	APVD
A2	A2	14NOV2011	Lee	WZ
A3	A3	28Jun2012	Lee	WZ

NOTE:
1. MATERIAL:
HOUSING : (SEE TABLE)HIGH TEMPERATURE PLASTICS U.94V-0; COLOR:(SEE TABLE)
CAP: LCP+30%GF,HIGH TEMPERATURE PLASTICS U.94V-0; COLOR:BLACK.
CONTACTS: COPPER ALLOY,T=0.25mm.
SPRING : STAINLESS STEEL SUS304-H,T=0.30mm.
SHELL:STAINLESS STEEL,T=0.15mm.
BOARDLOCKS:BRASS,T=0.30mm.
2. FINISH:
CONTACTS: (SEE TABLE) GOLD PLATED ON CONTACT AREA,
100 μ Min MATTE-TIN PLATING ON SOLDER TAIL,
WITH ENTIRE CONTACT UNDERPLATED 50 μ Min NICKEL.
SPRING : 30 μ Min NI-PI PLATED.
SHELL: 30 μ Min NI-PI PLATED
BOARDLOCKS: 30 μ Min NI-PI PLATED.



RECOMMEND P.C.B LAYOUT
PCB TOLERANCE:±0.05

GP	BLACK	PA9T	[15 μ]]	09-0113-04
	WHITE <td>PA6T <td>[15μ]] <td>09-0113-03</td> </td></td>	PA6T <td>[15μ]] <td>09-0113-03</td> </td>	[15 μ]] <td>09-0113-03</td>	09-0113-03
ROHS	BLACK <td>PA9T <td>[15μ]] <td>09-0113-02</td> </td></td>	PA9T <td>[15μ]] <td>09-0113-02</td> </td>	[15 μ]] <td>09-0113-02</td>	09-0113-02
	BLACK <td>LCP <td>[15μ]] <td>09-0113-01</td> </td></td>	LCP <td>[15μ]] <td>09-0113-01</td> </td>	[15 μ]] <td>09-0113-01</td>	09-0113-01
Environmental standard	COLOR	HOUSING MATERIAL	MIN. GOLD THICKNESS	PART NUMBER

Zhongxiang Electron Science CO.,LTD

SATA 7+12P, RIGHT ANGLE SMT TYPE.

TOLERANCES UNLESS OTHERWISE SPECIFIED:		DWG	14NOV2011
0 PLG	±	CHK	Jackson_Lee
1 PLG	±0.3	APPD	CITONG-JIANG
2 PLG	±0.2	WEI	ZHANG
3 PLG	±0.15	PRODUCT SPEC	14NOV2011
4 PLG	±	APPLICATION SPEC	
ANGLES	± 3°	FINISH	SEE NOTE
MATERIAL	SEE NOTE	PRODUCTION	SEE NOTE
PROJECTION		WEIGHT	
DIMENSIONS: MM		SCALE	1 OF 1
SIZE	DRAWING NO	RESTRICTED TO	
A3	C-09-0113		
CUSTOMER DRAWING		SHEET	1 OF 1
		REV	A3

8 7 6 5 4 3 2 1